

SOFTWARE

MAPFACTOR NAVIGATOR: CONVERT YOU POIS

25.07.2014

I am currently switching to [Mapfactor Navigator](#) mainly to use now also offline Open Street Maps.

The main problem is to get all those old waypoints converted. Unfortunately it is confusing what developers but users are reporting on different forums. MN obviously used different tools at different times and even different directories.

Before you start, get the most recent version of [GPSBABEL](#) 1.5.1 (which runs natively on OSX) as well as [DIGGER](#) 12. To run Digger on OSX, install [WINE](#) and move the DIGGER 12 binaries to the internal C drive, as it will crash otherwise. Also put a nice [200×200 PNG](#) with a circle and a transparent background into the same directory. The Android directory - for the Mapfactor Navigator files is

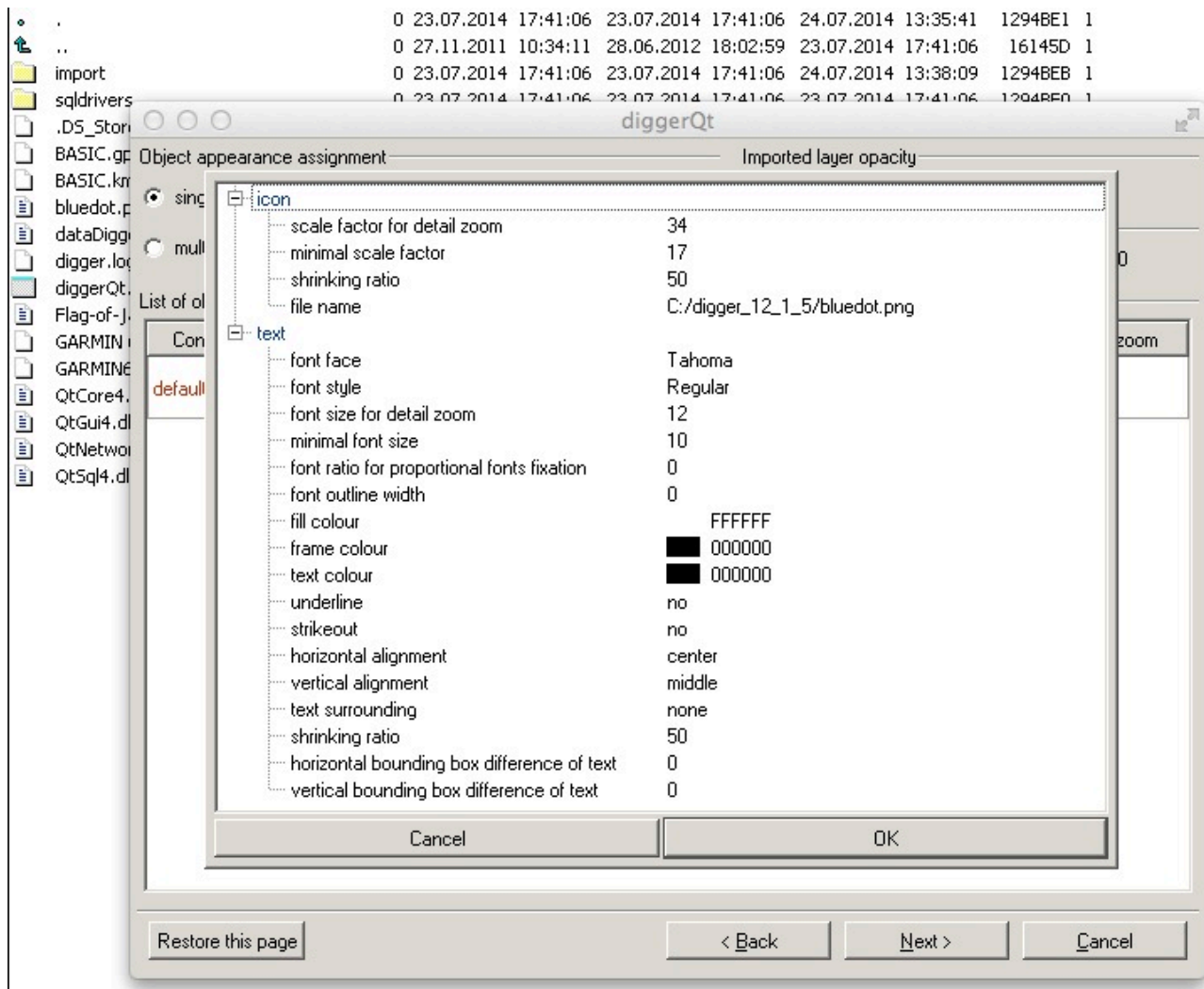
```
SDdisk/Android/data/com.mapfactor.navigator/files/navigator
```

where the favourites.xml sits. favourites.xml is a file that holds the POIs and can be edited by any text editor. Just enter a few waypoints, open it on the Mac to see the file structure. The /data directory holds the *.mca files. These are binary files for the permanent overlay. If you don't need to see you POIs all the time, just forget about mca and digger and stick to gpsbabel to convert your gpx files as shown below.

The screenshot shows the 'Eingabe' (Input) section of the Mapfactor Navigator application. It features a radio button selection for 'Datei' (selected) and 'Gerät' (Device). The 'Format' dropdown is set to 'GPX XML'. Below this, the 'Dateiname' (Filename) field contains the path '/Users/wjst/Desktop/GARMIN60.gpx'. An 'Optionen' (Options) button is present. The 'Übersetzungsoptionen' (Translation options) section includes checkboxes for 'Wegpunkte' (checked), 'Routen' (unchecked), and 'Tracks' (unchecked), along with a 'Filter' button and a 'weitere Optionen' (More options) button. The 'Ausgabe' (Output) section has radio buttons for 'Datei' (selected) and 'Gerät', with the 'Format' dropdown set to 'Mapfactor Navigator'. The 'Dateiname' field shows '/Users/wjst/Desktop/GARMIN60.xml'. At the bottom, there are 'Help', 'Close', and 'OK' buttons.

The resulting xml file can be used for cut & paste into favourites.xml, and you are done.

The more complicated part comes with digger. The first 3 screens of this tool are quite straightforward while the "NEXT" button on the last screen is grayed out. And no help in sight! Only by [an instructional video](#) I came around that page: clicking on test in the first line and editing the POI thumbnail location, lets you do the final conversion.



HTH.