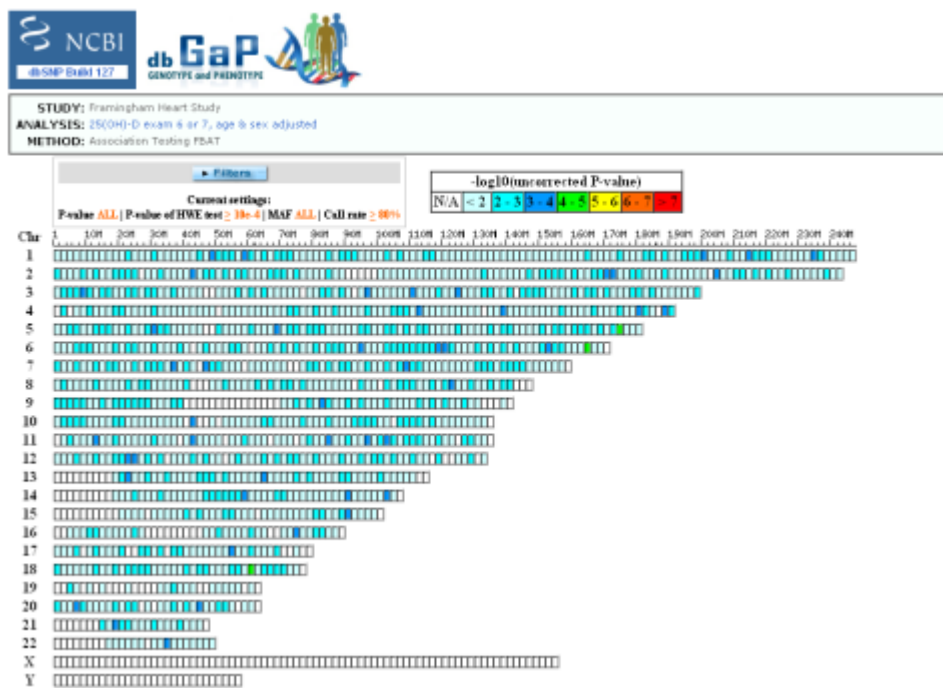


GENETICS, VITAMINS

FIRST 25OH-D3 GWA ONLINE

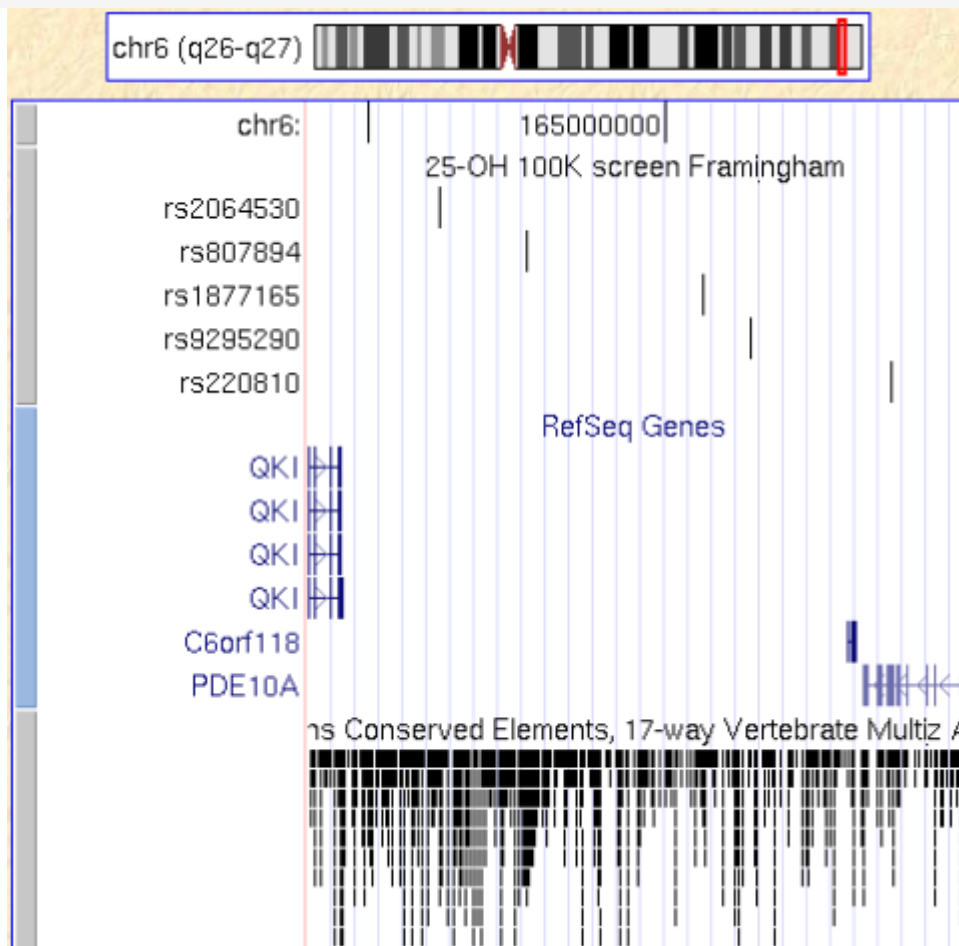
19.11.2007

The first genomewide association for vitamin D serum levels is already online as the Framingham people told me earlier this day, [many thanks!](#)



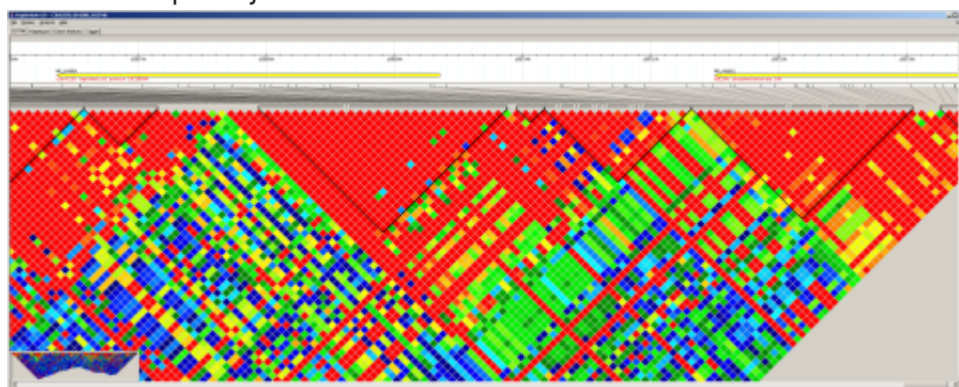
There are 3 important regions on the above figure figure: around rs1394615, rs1877165 and rs2160595, see also the attached excel sheet [fram25ohdexam6or7agesexadj.xls](#).

What are the reasons that [my linkage study](#) arrived at completely different regions? The accompanying [BMC Genetics paper](#) even highlights 2 different SNPs: rs1048516 + rs10507577). Anyway, the best region in my opinion is on chromosome 6. Here are the significant SNPs in relation to their neighboring genes:

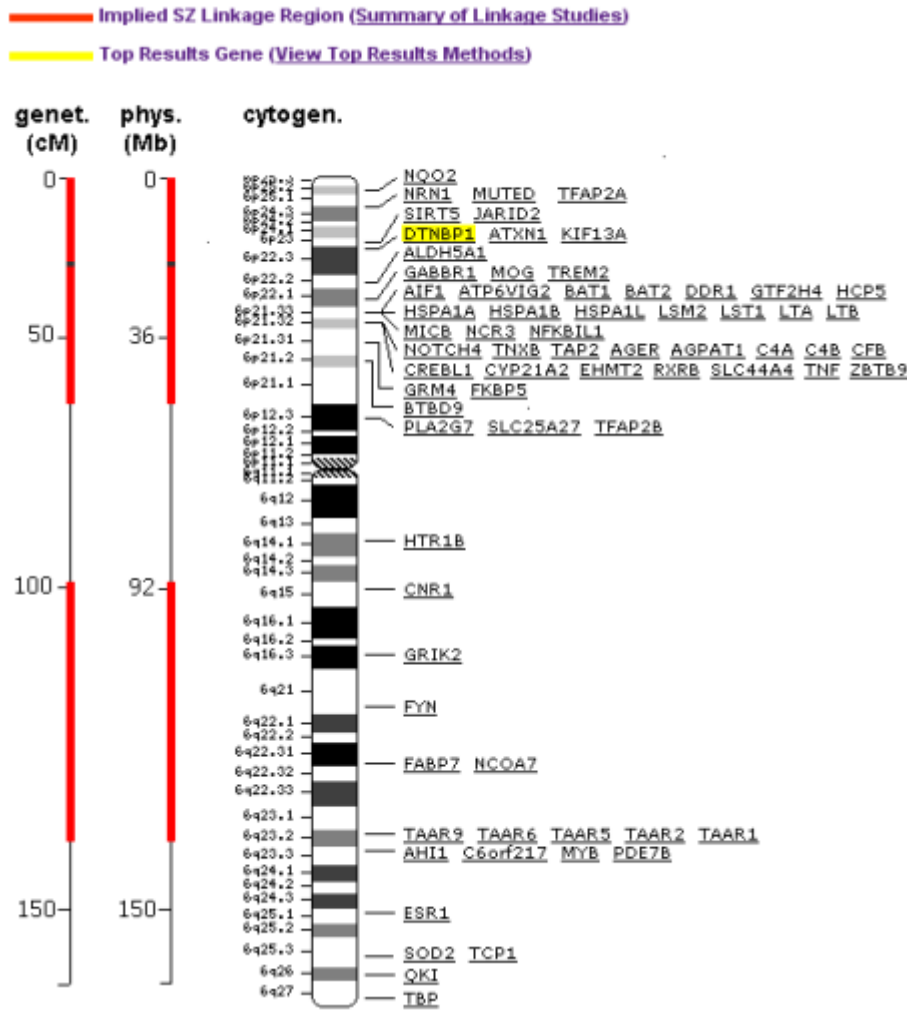


The phosphodiesterase PDE10A on the right is leading to PUBMED entries on [schizophrenia](#) and [diabetes](#). Asthma is also not so far away with phosphodiesterase inhibitors like theophylline. Isn't that nice? Quaking (QKI) on the left is also a [schizophrenia gene](#), and [defective smooth muscle](#) in QKI k.o. may relate to asthma as well.

Does LD explain joint SNP effects?



maybe, maybe not... Is it a known candidate region?



[Not so far.](#)