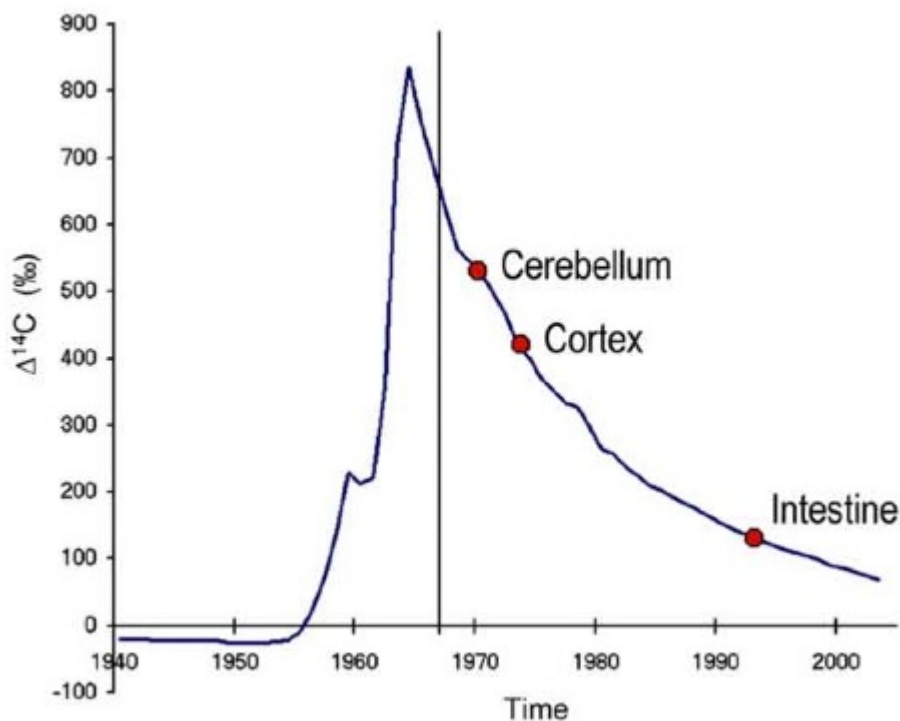


GENETICS

WHAT COULD BE DONE – SINGLE CELL BIRTH DATING

24.09.2018

The famous [Spalding paper](#) 2005 used an interesting approach



We show that the level of ^{14}C in genomic DNA closely parallels atmospheric levels and can be used to establish the time point when the DNA was synthesized and cells were born... Retrospective birth dating is a generally applicable strategy that can be used to measure cell turn-over in man under physiological and pathological conditions.

I was more in [favor of calculating mutation rates](#), S. Horvath [suggested methylation changes](#). Maybe [lineage tracking](#) will be the next big thing in [single cell analysis](#) and the [human cell atlas](#)?

CC-BY-NC Science Surf accessed 20.12.2025 